

Mike
Dobson



98 Templegate Avenue
Halton, Leeds, LS15 0HH

Chain Free £275,000

98 Templegate Avenue

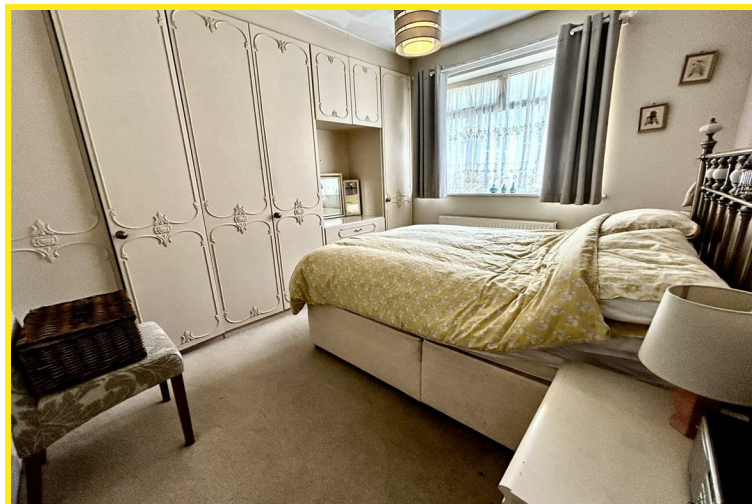
Nestled in the desirable area of Templegate Avenue, Leeds, this charming semi-detached bungalow offers a perfect blend of comfort and modern living. With three well-proportioned bedrooms, this property is ideal for families or those seeking a peaceful retreat.

Upon entering, you are welcomed into a spacious lounge that boasts a feature fireplace, complete with an electric fire, creating a warm and inviting atmosphere. The modern fitted kitchen is equipped with a built-in oven, hob, and extractor, making it a delightful space for culinary enthusiasts.

The bungalow features a three-piece white shower room, which includes a walk-in shower cubicle, a pedestal wash basin, and a low flush WC, ensuring convenience and style. The property benefits from gas central heating, powered by an up-to-date combination boiler, and is fitted with PVCu double glazing, providing energy efficiency and comfort throughout the year.

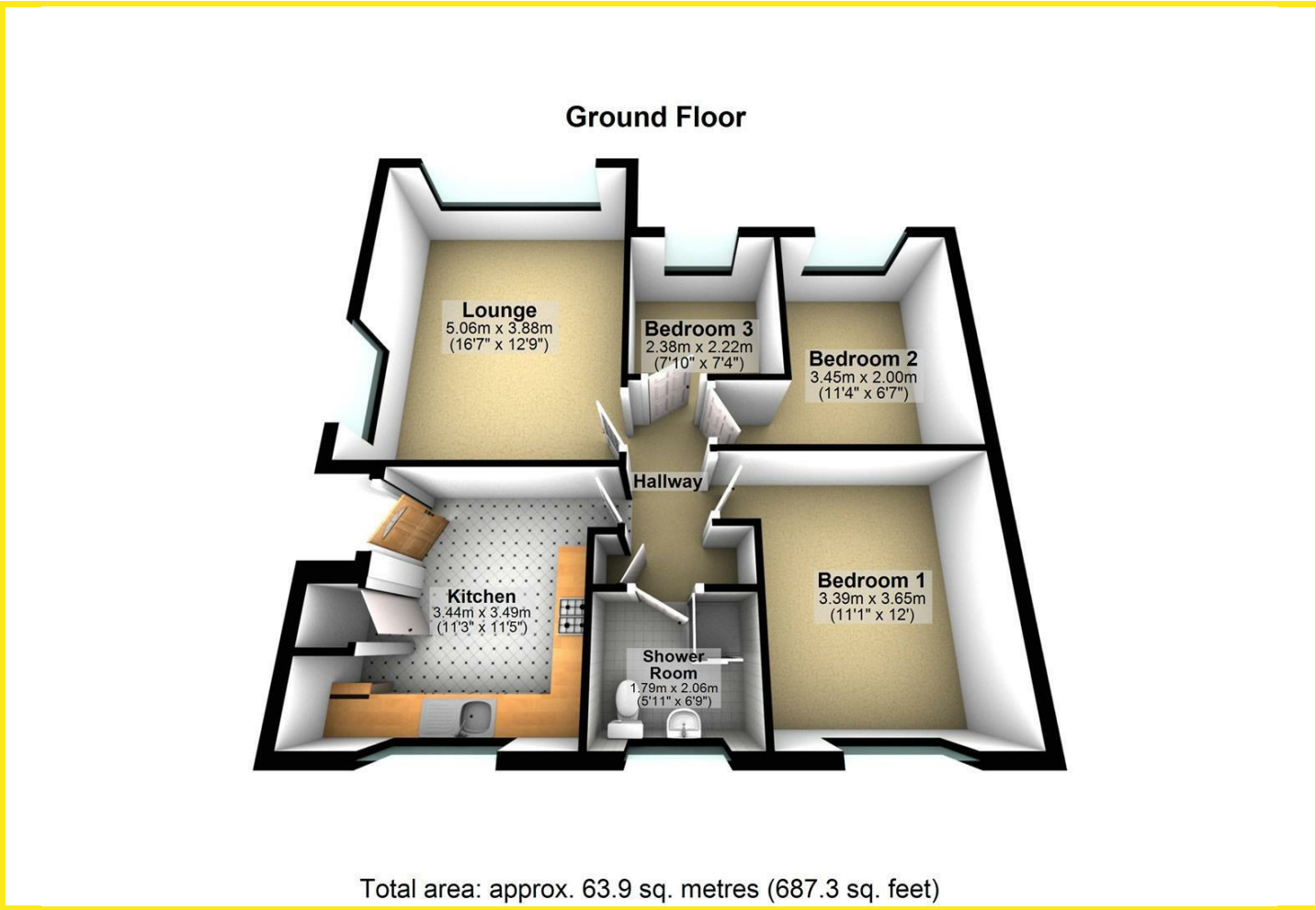
Externally, the property features wrought iron gates that lead to a resin driveway, offering ample parking for up to three vehicles. Additionally, a detached garage with a remote-controlled door, power, and lighting adds further convenience and storage options. The property has neat, well-maintained lawned garden to the front with flower borders. To the rear is a low maintenance paved garden ideal for sitting out on those sunny days.

This delightful bungalow on Templegate Avenue is not just a house; it is a home that promises a comfortable lifestyle in a sought-after location. With its modern amenities and spacious layout, it is a must-see for anyone looking to settle in Leeds.





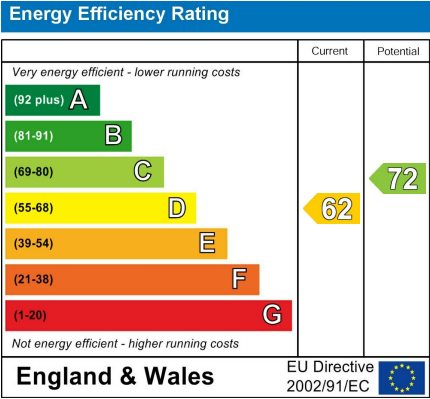
Floor Plan



Area Map



Energy Efficiency Graph



Directions

Head south on Main St/B6137. Turn right onto Selby Rd/A63. At the roundabout, take the 2nd exit and stay on Selby Rd/A63. At Austhorpe Interchange, take the 2nd exit onto Selby Rd/A6120. Turn left toward Ring Rd/Selby Rd/A6120. Continue straight onto Ring Rd/Selby Rd/A6120. At the roundabout, take the 2nd exit continuing on Selby Road, taking your 7th left onto Temple Gate , continue along this road to the 'T' junction turning right onto Templegate Avenue, where the property can be found on the right hand side as indicated by the agents board,

These particulars, whilst believed to be accurate are set out as a general outline only for guidance and do not constitute any part of an offer or contract. Intending purchasers should not rely on them as statements of representation of fact, but must satisfy themselves by inspection or otherwise as to their accuracy. No person in this firms employment has the authority to make or give any representation or warranty in respect of the property.